



RT-Vision

Data Trending and Fleet Management Ground Station

Designed by Aircraft Engineers for Aircraft Engineers

Description

Designed for use by operators of Helitune data-gathering products, RT-Vision is a leap forward in both ideas and methods of data storage, presentation and manipulation. Created with the operator in mind, it is built around an easy-to-use graphical user interface, providing instant access to required data. By virtue of its modular design, RT-Vision can be used to manipulate data from a variety of different machine types, from Helicopters to Engine Change Units to Land Borne Vehicles.

Features

It works as a standalone product or on a LAN/WAN system with full supervisory functions.

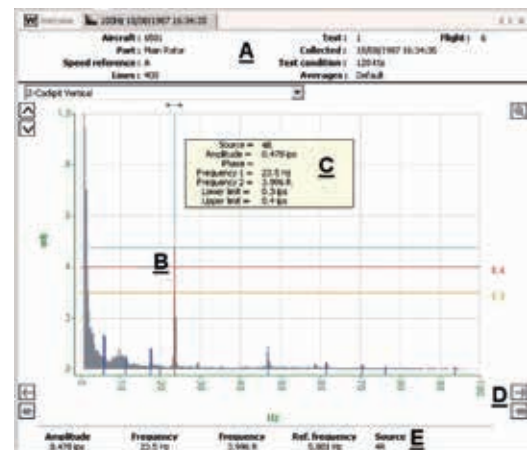
The user interface is Windows based, and both graphically and menu driven. The usual Windows features are implemented, including a drag and drop facility for graph and report building.

RT-Vision Functions Design Structure

- Intuitive user interface.
- Modular design allowing expansion through targeted add-ons.
- Available in several languages.

Functionality

- Standard Windows installation program.
- View data across all current Helitune equipment platforms.
- Select and view FFT, RunUp/RunDown, Vibration Order Tracking, Blade Track, Balance, NR Tune, Settings, Prompts and Notes information both graphically and as text format.
- Vibration trending for condition monitoring.
- Limit checking on data import and on demand.
- User-defined, easily configured quick reports.
- User-defined queries for database interrogation.



- Full audit trail.
- Automated database back-up.
- Full supervisory control for User Groups and individual users.
- Individual user log-on identification.
- Export data in CSV formats, allowing data exchange with data manipulation packages such as Microsoft Excel and Mathcad®.
- Predictor minimum flights, track and balance solutions package.
- Fully compatible with all current Helitune Rotortuner products.
- Card Copy Utility to transfer data between media types.
- Fault Code capability allows recording of maintenance actions on a flight by flight basis.
- Synchronise data with RT-6 Flitepad.
- Export archived data back to a media suitable for use with RT-2000, RT-5, RT-5JS+ and RT-JEM platforms.
- View data directly from the test card prior to import.
- Integral Intelligent Help System.
- Narrow Band Alarms allows amplitude limits to be defined across a frequency range. This would be used for frequencies that are not order dependant.

